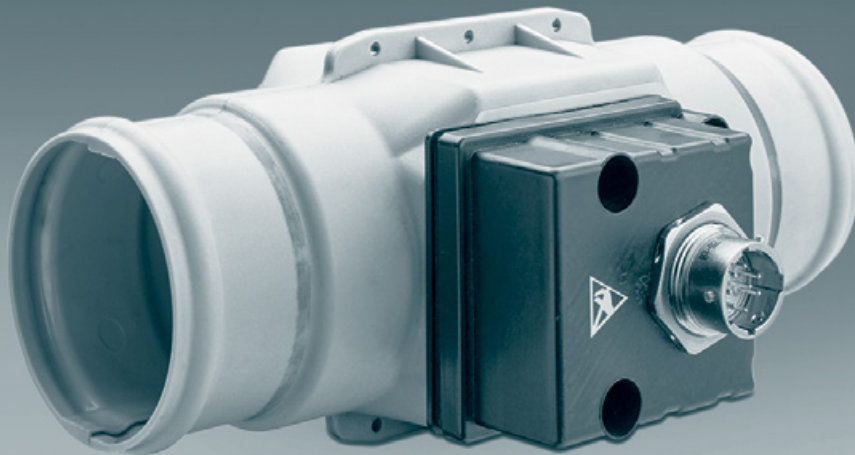




VINCORION



QUALITY. **PROVEN.**

LET'S HEAT THINGS UP WITH OUR DURABLE AIR DUCT HEATER

Powerful solutions providing both safety and comfort.

An aircraft must operate in extreme outside temperatures of -50°C . This is where Vincorion Air Duct Heaters come in – performing their job of maintaining key areas of an aircraft warm. The inline Air Duct Heaters can be used on many types of planes since they are scalable from a nominal heating power* of 300 W up to 6,000 W. They warm the air supplied to aircraft sections, including crew

rest compartments, cargo areas, cockpit areas or cabin zones. Vincorion Duct Heaters are comprised of a heater core that is based on a positive temperature coefficient (PTC) element – a self-regulating technology that provides safety at the highest level, thanks to the built-in sensors, not to mention total comfort within your aircraft.

* Depends on operating conditions (air flow, air density, and air inlet temperature).

VINCORION AIR DUCT HEATERS ARE HIGHLY RELIABLE, COST EFFECTIVE, AND DURABLE. THANKS TO THEIR DEMAND-ORIENTED AND REGULATED PERFORMANCE.

OPTIMALLY CONTROLLED AND MONITORED VIA VINCORION HEATING CONTROL UNITS.

With Air Duct Heaters, the heating is dependent upon the airflow provided by the aircraft, as well as the air inlet temperature, so consistent and uniform heating is guaranteed. And the heating power is adjustable between 0 and 100 percent using a pulse-width modulation (PWM) pattern. What's more, our Air Duct Heaters are controlled and monitored using our own heating control units developed to work seamlessly with our heating unit – a perfect match.



Air Duct Heater (300W)



Air Duct Heater (1,200W)

MORE THAN THE SUM OF ITS BENEFITS.

- **High flight safety:** With self-regulating PTC technology, maximum flight safety is achieved.
- **High durability and reliability:** PTC ceramics have proven to be much better than material used for conventional heaters, so they have a long service life and reduced life cycle cost.
- **Zero corrosion:** No need to worry about corrosion because it will not happen, thanks to the resilient composite housing.
- **Less weight:** Composite housing also means less overall weight.
- **Flexible adjustment to specific customer needs:** The scalable design means the units can be adapted to every need and requirement.
- **Added value for customers:** Also available with integrated control functionality – making the unit a smart investment.
- **High passenger and crew comfort:** The Vincorion Air Duct Heater provides reliable heating for every section of an aircraft.

Technical specifications

Weight	from 0,5 kg to 4,5 kg
Nominal heating power	300 W–6,000 W
Power supply	115 V AC (360–800 Hz) single or three phases

Other specifications and options are available on request.